

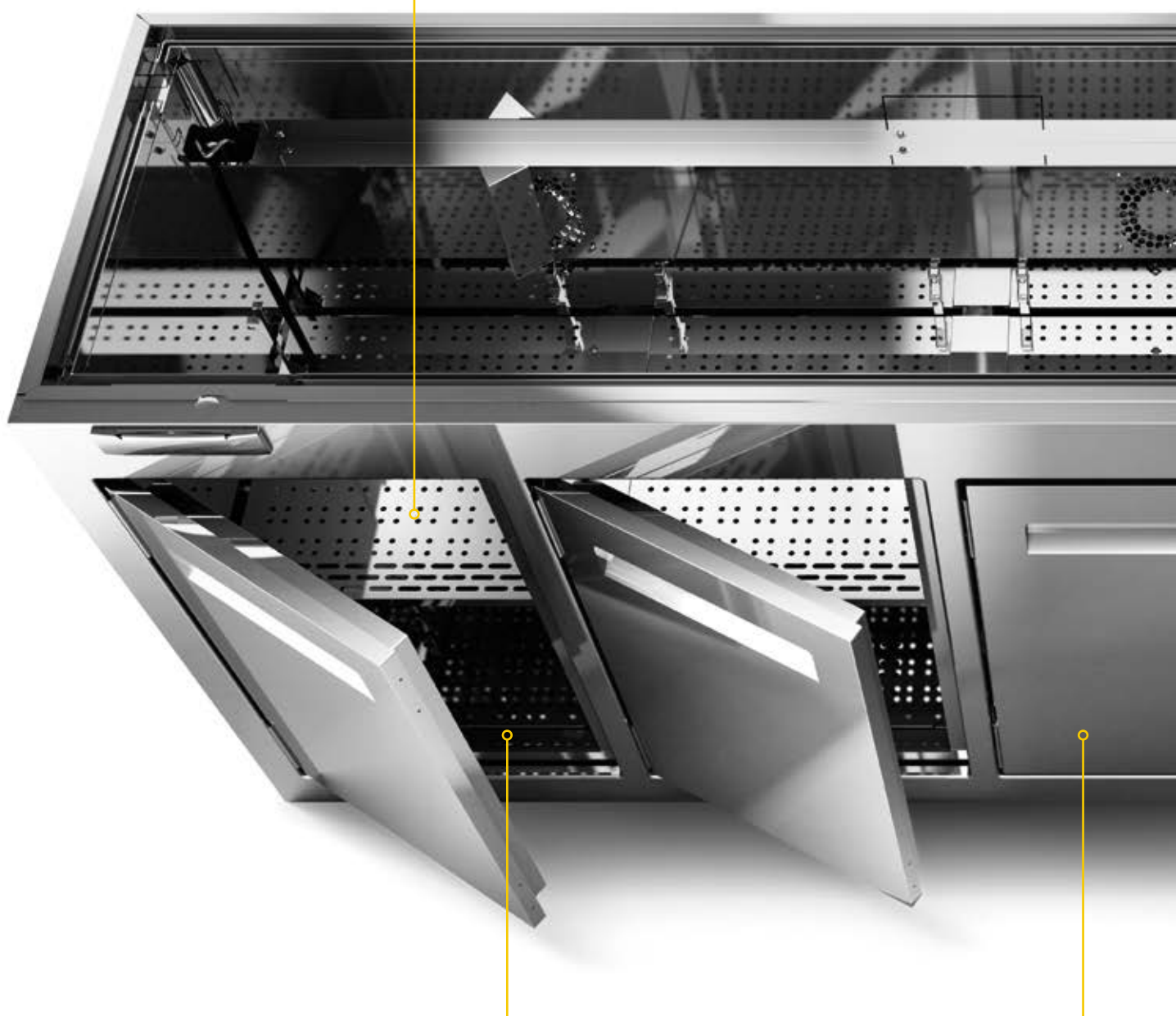
# Refrigerated Counter Bodies

**H 77-86**

**P 58-65**

**L 50-100-150-200-250**

The lower and intermediate grill, made of 18/10 AISI304 stainless steel in BA finish, is a kit of 4 die-cast supports in aluminium that allow positioning and height adjustment in 3 positions.



Interior with rounded edges to facilitate cleaning operations.

Flush door with 180° opening  
In 18/10 AISI304 stainless steel with a BA gloss finish.

---

**TN RV** - Ventilated chiller

---

**TN RSM** - Static chiller

---

**TB RSM** - Static freezer

---

---

aria  
R290

The standard refrigeration system is equipped with automatic defrost and contains a finned evaporator (RV version) along the entire length of the wall. Low power consumption fans with **front casing air conveyor** (made of 18/10 AISI304 stainless steel) for **uniform temperature distribution**.



One-piece structure in stainless steel AISI304 18/10 polished with seamless look on the outside

Monolithic structure insulated body, foamed with ecological CO<sub>2</sub> polyurethane with 40 Kg/mc density

---

# Refrigerated storage units

---

**H 45-56**

**P 65**

**L 100-150**



3-door unit  
**H45**

Flush door with 180° opening  
In 18/10 AISI304 stainless steel  
with a BA gloss finish.



3-door unit  
**H56**

Flush door with 180° opening  
In 18/10 AISI304 stainless steel  
with a BA gloss finish.

**Cross sections  
and data sheets**

---

# **COUNTER BODIES**

**ABACO®**

# TN Refrigerated counter bodies

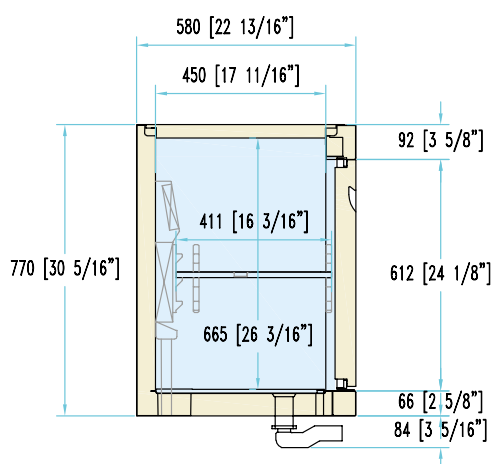
**H 77**

**P 58-65**

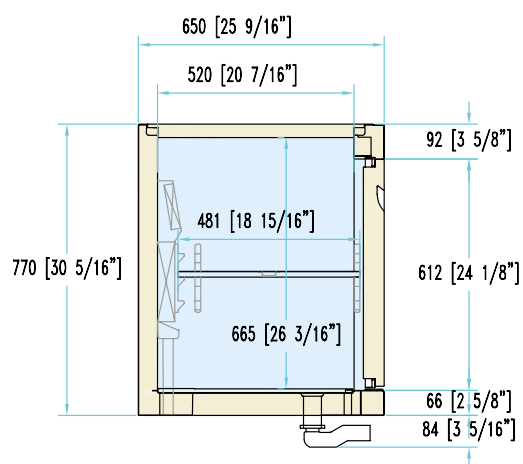
**L 50-100-150-200-250**

- RV-RSM

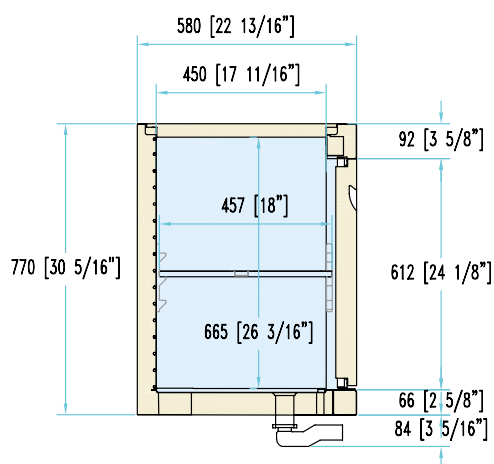
**P58  
RV**



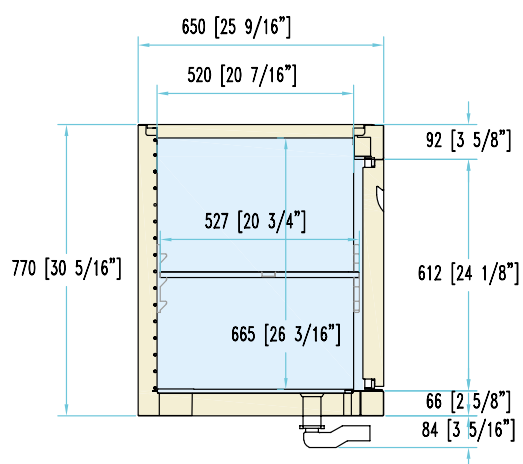
**P65  
RV**



**P58  
RSM**



**P65  
RSM**



		mm	Inch
	SCARICO	DRAIN PIPE	Ø40-Ø20 01.5"-Ø3/4"
	ALLACCIAMENTO GAS	REFRIGERANT PIPING	Ø8-Ø6

# TN Refrigerated counter bodies

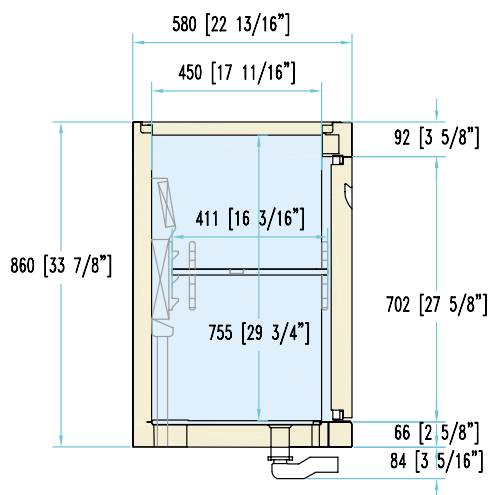
**H 86**

**P 58-65**

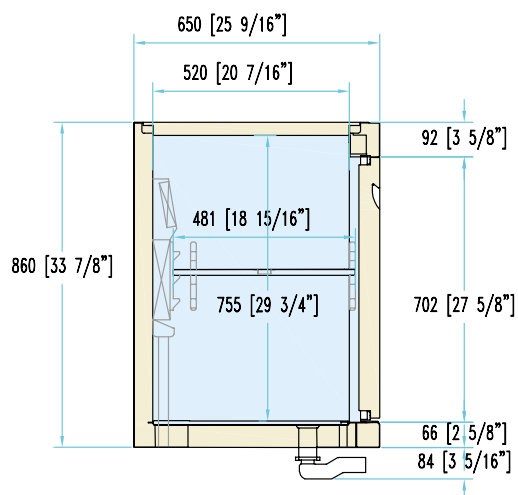
**L 50-100-150-200-250**

- RV-RSM

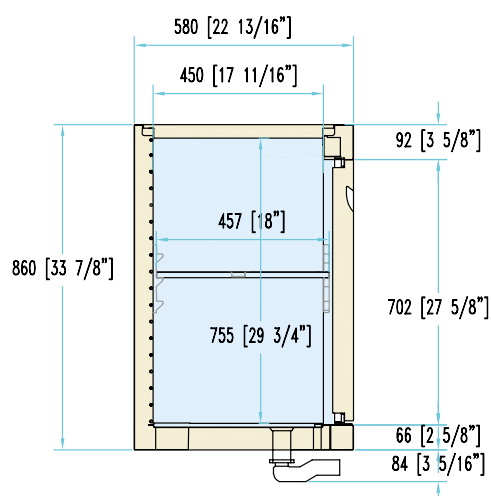
**P58  
RV**



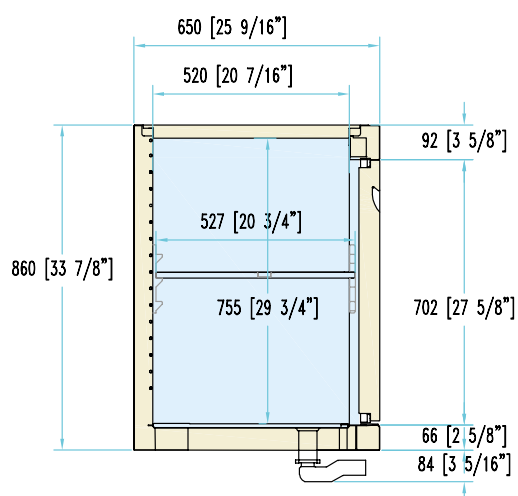
**P65  
RV**



**P58  
RSM**



**P65  
RSM**



		mm	Inch	
	SCARICO	DRAIN PIPE	Ø40-Ø20	Ø1.5"-Ø3/4"
	ALLACCIAMENTO GAS	REFRIGERANT PIPING	Ø8-Ø6	

# TB Freezer counter bodies

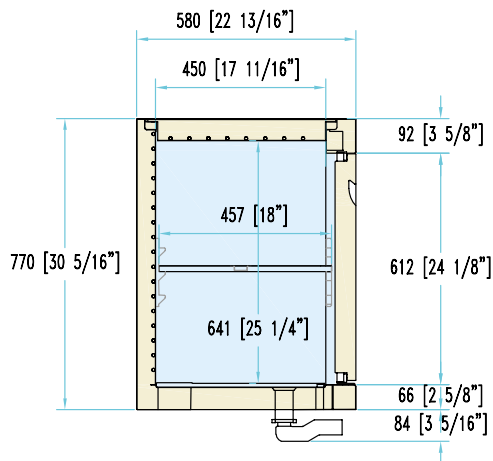
**H 77**

**P 58-65**

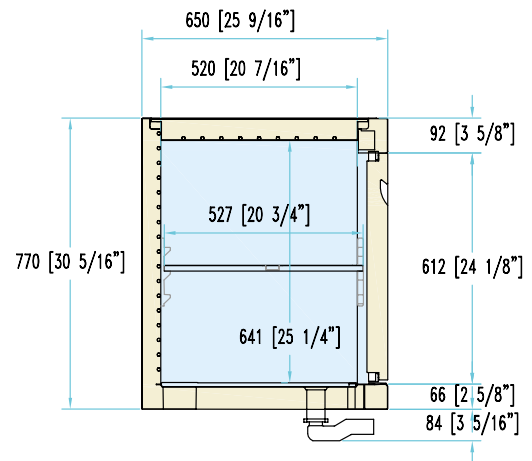
**L 50-100-150**

- RSM

**P58  
RSM**



**P65  
RSM**



			mm	Inch
	SCARICO	DRAIN PIPE	Ø40-Ø20	Ø1.5"-Ø3/4"
	ALLACCIAMENTO GAS	REFRIGERANT PIPING	Ø8-Ø6	



# TB Freezer counter bodies

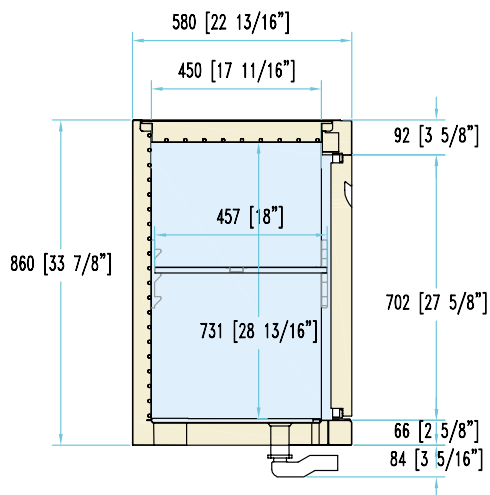
**H 86**

**P 58-65**

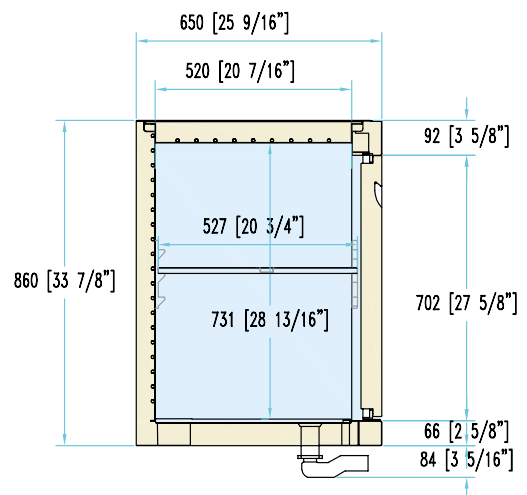
L 50-100-150



- RSM

**P58  
RSM**



**P65  
RSM**



			mm	Inch
	SCARICO	DRAIN PIPE	Ø40-Ø20	Ø1.5"-Ø3/4"
	ALLACCIAMENTO GAS	REFRIGERANT PIPING	Ø8-Ø6	

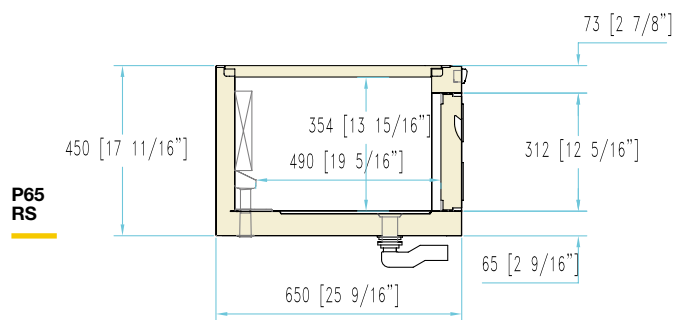
# TN Refrigerated counter bodies

**H 45**

**P 65**

L 100-150

- RS



# TN Refrigerated counter bodies

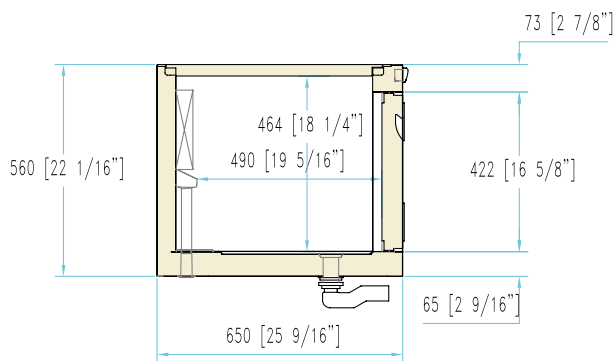
**H 56**

**P 65**

L 100-150

- RS

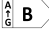
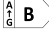
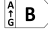
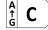
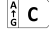
**P65**  
**RS**



## TECHNICAL DATA

# TN Refrigerated counter bodies

### UCB plug-in condensing unit

DOORS	1	2	3	4	5
Capacity [lt]	158	324	493	669	845
Weight [kg]	60	90	120	150	180
Climatic class	7				
Climate conditions	35°C/ 75% R.H.				
Working temperature [°C]	+2/+10				
Compressors [q.ty/ type]	1/ hermetic				
Defrost	Off cycle				
Power Supply [V/hz]	230/50				
<b>VENTILATED refrigeration</b>	377	482	482	724	724
Heat extraction rate (Ørun) [W@-10]					
<b>Energy class</b>					
Rated absorbed power [W/A]	203/ 1,26	262/1,63	262/1,63	351/2,18	351/2,18
Absorbed power during defrost [W/A]	38/0,24	38/0,24	38/0,24	52/ 0,32	52/ 0,32
<b>R452A</b>					
Rated absorbed power [W/A]	229/ 1,42	331/2,06	331/2,06	482/2,99	482/2,99
Absorbed power during defrost [W/A]	38/0,24	38/0,24	38/0,24	52/ 0,32	52/ 0,32
<b>STATIC refrigeration</b>					
Heat extraction rate (Ørun) [W@-10]	377	482	482	724	724
<b>R290</b>					
Rated absorbed power [W/A]	188/ 1,17	214/ 1,3	214/ 1,3	281/ 1,75	281/ 1,75
Absorbed power during defrost [W/A]	10/ 0,06	10/ 0,06	10/ 0,06	10/ 0,06	10/ 0,06
<b>R452A</b>					
Rated absorbed power [W/A]	206/ 1,28	268/1,66	268/1,66	378/ 2,35	378/ 2,35
Absorbed power during defrost [W/A]	10/ 0,06	10/ 0,06	10/ 0,06	10/ 0,06	10/ 0,06

### UCR remote condensing unit

DOORS	1	2	3	4	5
Refrigerants	R404A/ R452A				
Climatic class	7				
Climate conditions	35°C/ 75% R.H.				
Defrost	Off cycle				
Power Supply [V/hz]	230/50				
Absorbed power of ventilated units [W/A]	38/0,24	38/0,24	38/0,24	52/ 0,32	52/ 0,32
Absorbed power of static units [W/A]	10/ 0,06	10/ 0,06	10/ 0,06	10/ 0,06	10/ 0,06
Absorbed power of remote condensing unit [W]	328	328	486	486	760
Condensing unit weight [kg]	16	16	16	16	20
Condensing unit dimensions LxDxH[mm]	450x300x270h	450x300x270h	480x330x295	480x330x295	500x330x297
Refrigerant piping diameter: Liquid/Suction 0-15mt	12/8	12/8	12/8	12/8	12/8
Refrigerant piping diameter : Liquid/Suction 16-30mt	14/8	14/8	14/8	14/8	14/8

## TECHNICAL DATA

# TB Freezer counter bodies

### UCB plug-in condensing unit

DOORS	1	2	3
Capacity [lt]	158	324	493
Weight [kg]	60	90	120
Climatic class	7		
Climate conditions	35°C/ 75% R.H.		
Working temperature [°C]	-18/-20		
Compressors [q.ty/ type]	1/ hermetic		
Defrost	Manual		
Power Supply [V/hz]	230/50		

### STATIC refrigeration

Heat extraction rate (Ørun) [W@-10]	258	258	270
<b>R290</b>			
Rated absorbed power [W/A]	262/1,6	394/2,5	430/2,7
Absorbed power during defrost [W/A]	46/0,22	81/0,4	117/0,6

### UCR remote condensing unit

DOORS	1	2	3
Refrigerants	R404A/ R452A		
Climatic class	7		
Climate conditions	35°C/ 75% R.H.		
Working temperature [°C]	-18/-20		
Defrost	Manual		
Power Supply [V/hz]	230/50		
Absorbed power [W/A]	46/0,22	81/0,4	117/0,6
Absorbed power of remote condensing unit [W]	593	593	832
Condensing unit weight [kg]	17	17	17
Condensing unit dimensions LxDxH[mm]	500X330X295	500X330X295	490X700X330
Refrigerant piping diameter: Liquid/Suction 0-15mt	14/8	14/8	14/8
Refrigerant piping diameter : Liquid/Suction 16-30mt	14/8	14/8	14/8

