

A photograph of a modern gelato display case in a cafe. The case is long and dark-colored with glass tops, filled with various gelato flavors. The background features a rustic wooden wall, a stone wall, and several hanging pendant lights. To the left, there are potted plants and a table with chairs.

DLT80

**GELATO
DISPLAY**

ABACO®



DLT80

Gelato display cabinet

H 117-135

P 80

L 125

Frontal and upper glass
Low-E coated heated glass.
Heated laminated side glasses.
Led lighting.

The rear air intake
allows the application of
completely closed front panels
without ventilation grilles.



Closing system with slides in transparent methacrylate with easy sliding system

Night closure system with insulated panels that interact with the controller deactivating defrosting. This allows important energy savings and perfect gelato preservation.

Perfect coupling with the refrigerated display cabinets of the DPN-C series

Steel cabinet base with adjustable feet. Wheels optional.



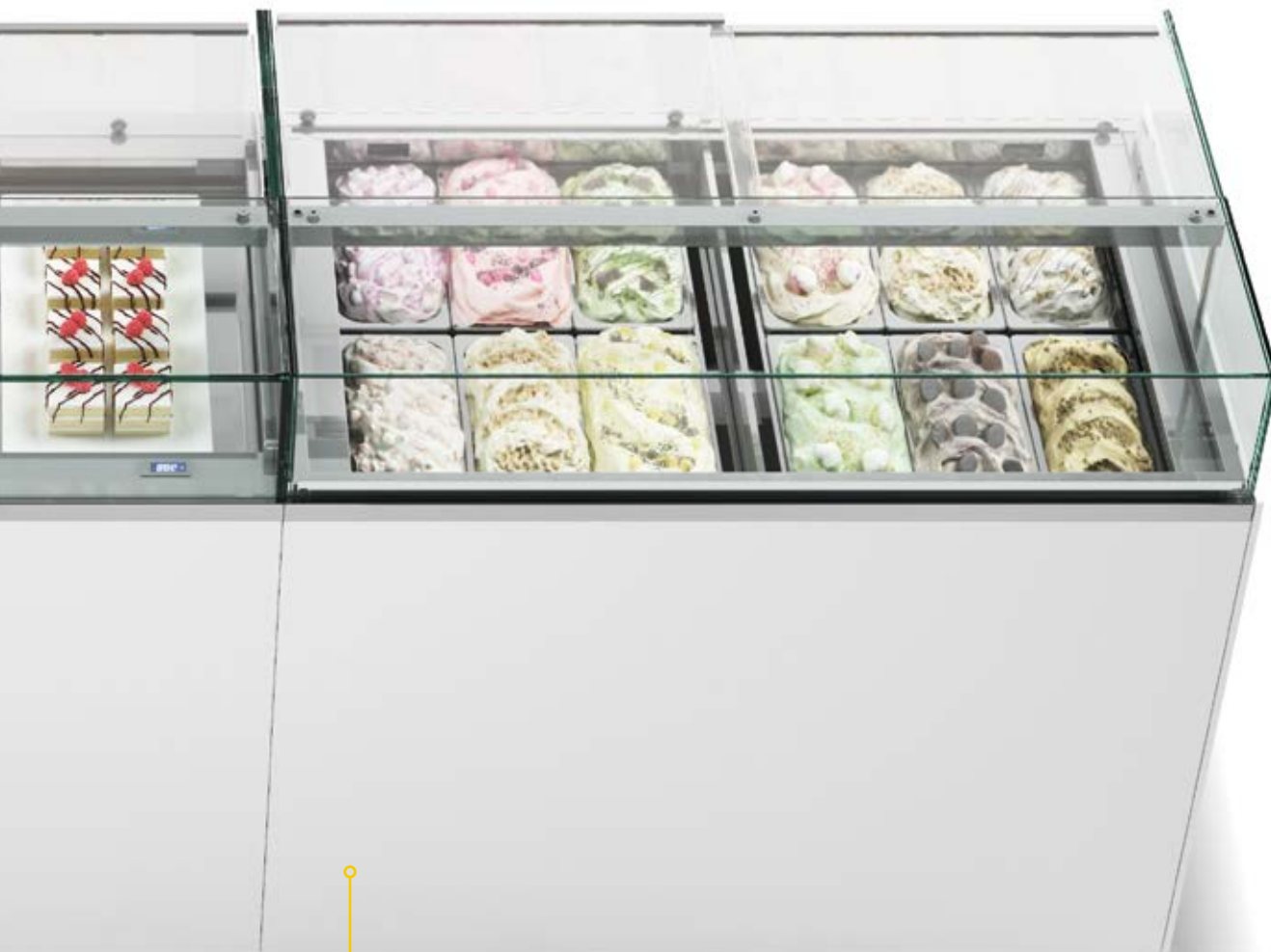
Multiplexing

FLT80-C
DPN80-C
SNK80-A



DLT80 can be aligned with the display cabinet series FLT80, DPN80 and SNK80-A both in depth (80 cm) and in height (117 and 135 cm).

Perfect alignment to the drop-in series thanks to the total height from the ground of 117 cm and the depth of only 80 cm.



The rear air intake allows the application of completely closed front panels - without ventilation grilles - achieving seamless designs.

Dual Temperature, Twin display set-up



**Low temperature
-18 °C**

Both sections work
at low temperature with
two different set points.



5 Lt
360 x 165 x 120h



5 Lt
360 x 250 x 80h



**Ice-cream
sticks**
360 x 250 x 80h



Pastry trays
360 x 250 x 80h



Low temperature -18 °C and medium temperature +4 °C

Thanks to the Dual Temperature option each of the two independent zones can work both at low and medium temperature



Medium temperature +4 °C

Both sections work at medium temperature with two different set points.



The DLT80 is the only professional display case with a double row of 5-liter trays in just 80 cm in depth. In order to achieve this result, the ISA R&D team has patented a new type of sideward ventilation (patented) which allows for the minimization of space depth.

The two sections can be set-up with gelato containers and their related accessories or with pastry trays. Dual temperature for each of the two sections: the best way to preserve and display any ice cream or pastry product.

Night mode Gelato preservation in the showcase



The double digital control unit allows independent setting of the two sections with a difference of max 8 °C between them.

The covers for the night mode function can be placed in the specific housing so that they are always at hand.

Day mode
Gelato is displayed
in tubs or trays.



Night mode
Gelato is stored
under the lids.



The night mode preservation system is automatically activated when the cover lids are placed in the slot above the display area. Magnetic sensors detect the presence of the lids and adapt defrosting cycles to turn the display into a storage unit, with huge benefits in terms of operations and energy-savings.

Glass structure configurations



Glued glass case
with LED lights
and sliding doors

H 117



5.700 K
4.000 K



**Glass structure
with tilt front,
LED lighting
and sliding doors**

H 117

5.700 K
4.000 K

H 135

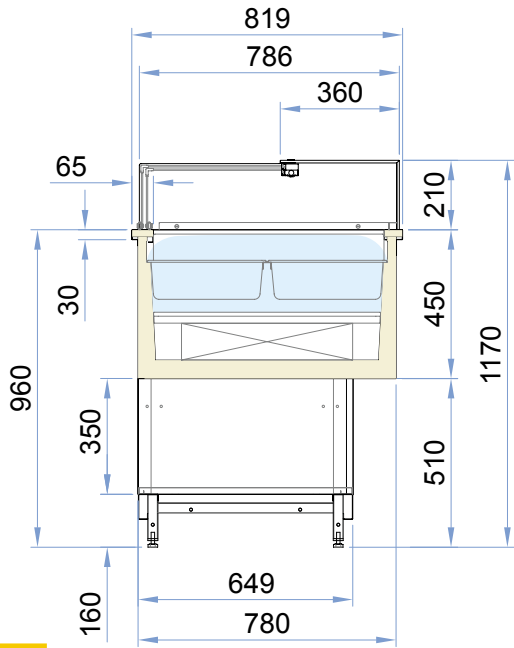
5.700 K
4.000 K

Cross sections RV TB/TN

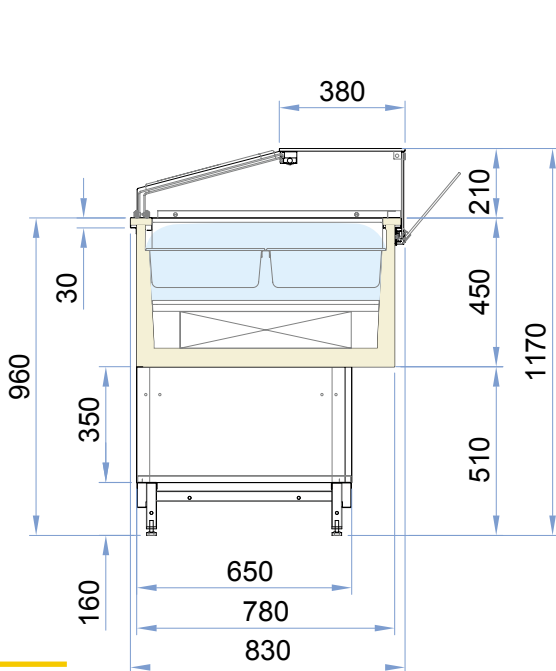
H 117-135

P 80

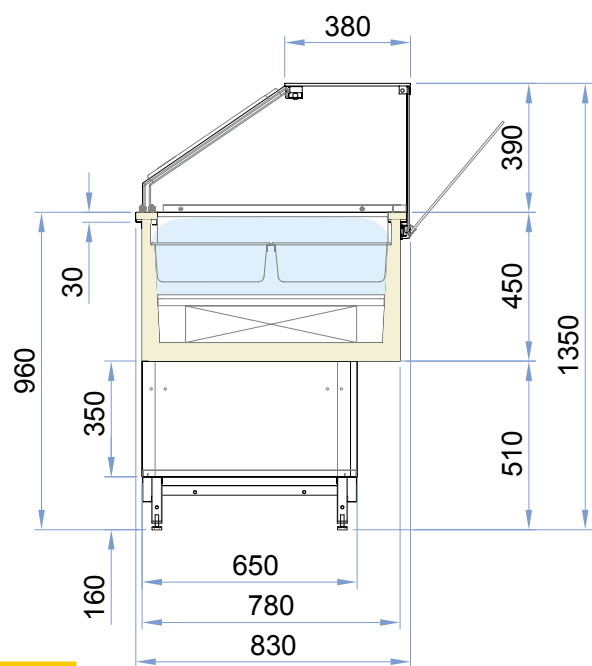
L 125



H117 Glued glass case with LED lighting and sliding doors



H117 Tilt glass with LED lighting and sliding doors



H135 Tilt glass with LED lighting and sliding doors

Technical data

UCB plug-in condensing unit

MODULE LENGTH	125
Climate class	4
Climate conditions	30°C/55% UR
TN mode (pastry/snack) operating temperature	+4/+8 °C
TB mode (ice-cream) operating temperature	-20/+2 °C
Compressors [q.ty/ type]	2/ hermetic
Defrost	Hot Gas
Power supply [V/hz]	230/50/ 1Ph
Rated absorbed power [W/A]	1.350 W / 7,5A
Absorbed power during defrost [W/A]	1.240 W / 6,6A
Refrigerant	R290
Weight	150 kg
Energy class	